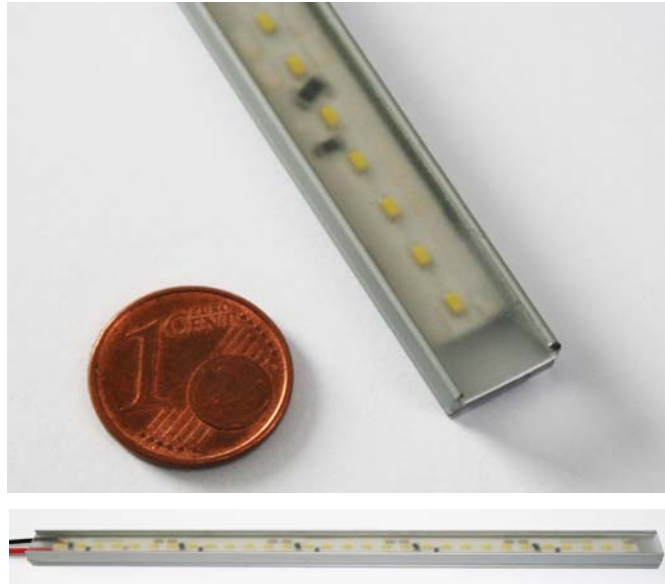


scheda caratteristiche tecniche ZED
ZED technical data sheet



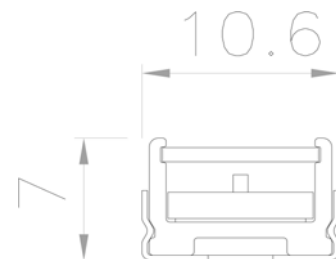
Dimensioni - Dimensions

Larghezza - Width : 10mm

Altezza - Height : 7mm

Lunghezze standard disponibili - Available standard lengths :

320mm
620mm
920mm
1220mm
1520mm
1820mm



**Su richiesta è possibile avere apparecchi speciali con misure multiple di 30mm
e misure maggiori di 1820mm fino ad un massimo di 3120mm**

Special sizes available on request in multiple units of 30 mm
and longer than 1820 mm up to max 3120 mm

Applicazioni - Application

**Linee luminose ad incasso a soffitto o a parete, ideale anche per gole luminose,
corridoi e illuminazione sottopensile**

Ceiling and wall recessed light lines, ideal for cove lighting, corridors or under shelves lighting.

Caratteristiche Elettriche - Electric specifications

Temperatura colore - Colour temperature **2900K / 4100K**

Flusso luminoso - Luminous flux **6 lm ogni LED**-each LED **360 lm 30 cm**

Numero di LED - LED quantity **200/m**

Angolo di emissione - Emission angle **180°**

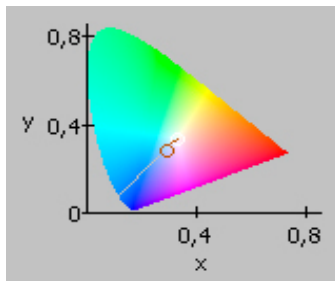
Tensione di alimentazione - Power supply voltage **24V**

Potenza assorbita - Absorbed power **13W/m**

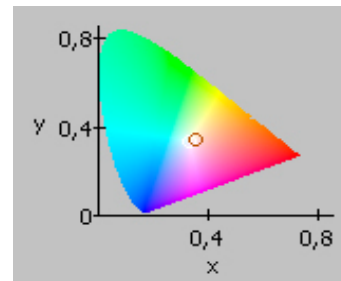
Temperatura d'esercizio - Operating temperature **-40° +50°**

Diagramma cromatico - Chromatic chart

Bianco - White **4100K**



Bianco - White **2900K**



Illuminamento - Illuminance

