



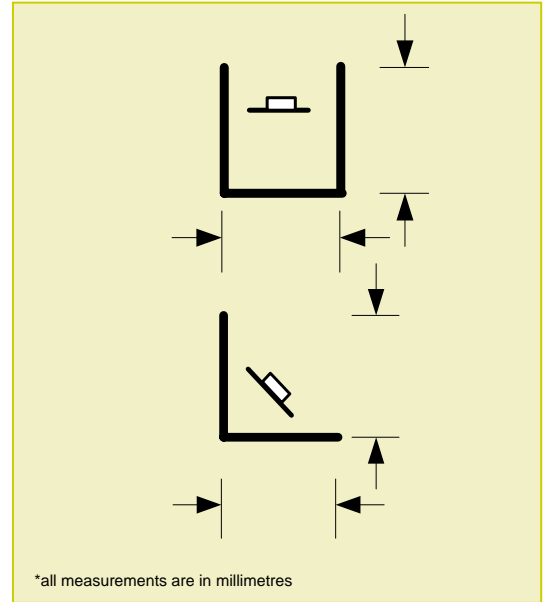
SINGLE COLOUR WASHING OR HIGHLIGHTING



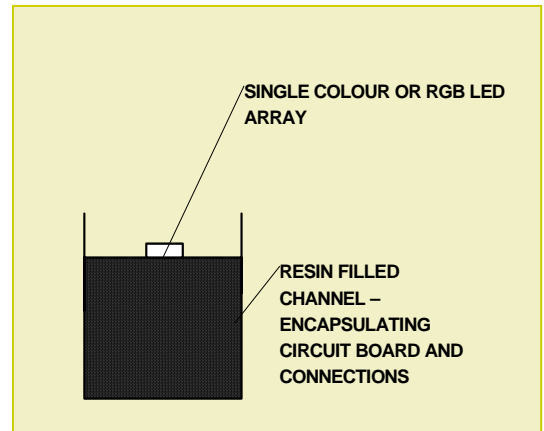
RGB COLOUR WASHING

**TECHNICAL SPECIFICATIONS**

<b>RATING:</b>	IP44 or IP68
<b>FINISH:</b>	Anodised or gloss powdercoated aluminium
<b>LED'S:</b>	100,000 Hours MTBF (dependant upon installation environment) LED's
<b>LED TYPE:</b>	PowerLED Surface Mount, 120° beam <b>(SM)</b> 5mm Megabright Through-hole, 12° beam <b>(TH)</b>
<b>RESIN FILL:</b>	Black Resin to the underside of the LED (for use with <b>SM</b> or <b>TH</b> LED's) <b>(IP44)</b> Black Resin to the underside of the LED & Clear Top (for use with <b>SM</b> LED's ONLY) <b>(IP68)</b>
<b>LED COLOUR:</b>	Multi Coloured <b>(RGB)</b> Green <b>(G)</b> White <b>(W)</b> Blue <b>(B)</b> Yellow <b>(Y)</b> Amber <b>(A)</b> Red <b>(R)</b> Warm White <b>(WW)</b>
<b>LED SPACING:</b>	Cluster <b>(RGB)</b> Single Colour 12.5mm <b>(012)</b> 25mm <b>(025)</b> 50mm <b>(050)</b> 100mm <b>(100)</b>
<b>CHANNEL TYPE:</b>	20 x 20 Channel <b>(2020C)</b> 20 x 20 Angle <b>(2020A)</b> 10 x 10 Channel <b>(1010C)</b>
<b>CHANNEL COLOUR:</b>	Black powdercoat <b>(BP)</b> Custom powdercoat <b>(CP)</b> Black anodised <b>(BA)</b> Natural anodised <b>(NA)</b>
<b>WATTAGE:</b>	0.3 watts per 3 LED's @ 12v D.C.
<b>WIRING:</b>	Pre wired with 1mtr cable. Feed tail position must be specified at time of order
<b>MOUNTING:</b>	Dependant upon application.



\*all measurements are in millimetres



**CONSTRUCTION MATERIAL**

Aluminium extrusion

**SPECIFICATION CODE:**  
**HLE – (LED Type) – (LED Colour) – (LED Spacing) – (Channel Type) – (Channel Colour)**  
 Must specify resin fill style wanted

**LOAD RATED AT 132 MPa (Peak Load of 26+ tonne, 263kN).**

**PLEASE NOTE** This fitting is a highly durable, shockproof, maintenance free product

**DIMENSIONS**

<b>Height:</b>	20mm
<b>Width:</b>	20mm

**APPLICATIONS**

- Foyer wall washing
  - Glass Work – Signage
  - Pelmet
  - Display Shelves
  - Water Features
- or similar



Larger cable sizes than normal are required to connect extra low voltage lighting. This fitting must be installed in a serviceable location and the correct maintenance and installation must be carried out to ensure the longevity of all products. Specification may change without notice and this fitting is sold subject to conditions of sale and terms of delivery. E.& O.E.