



DL 651 Remy

Lampada ad alogenuri metallici  
Metal halide lamp

 501.0651.1.83.00.1 HIT-TC-CE G8,5 1 x 35 W BI/WH  
Solo con alimentatore elettronico

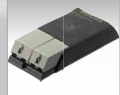
DL 652 Remy

Lampada ad alogenuri metallici  
Metal halide lamp

 501.0652.1.86.00.1 HIT-CE G12 1 x 70 W BI/WH



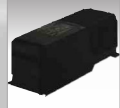
501.9510.A.00.0E.2 Alimentatore per alogenuri metallici 1 x 35 W G12  
**ELETTRONICO**



501.9510.A.01.0E.2 Alimentatore per alogenuri metallici 1 x 70 W G12  
**ELETTRONICO**



501.9510.A.00.00.2 Alimentatore per alogenuri metallici 1 x 35 W G12



501.9510.A.01.00.2 Alimentatore per alogenuri metallici 1 x 70 W G12



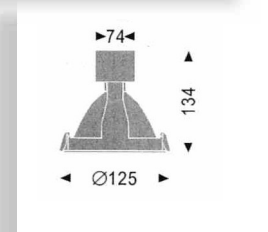
501.9501.A.00.CW.2 Cavo connessione con presa



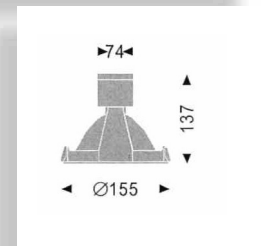
DL 651

DL 652

DL 651



DL 652



Cornice ed anello in alluminio  
Scatola in metallo verniciato a polvere  
Gruppo ottico orientabile ed estraibile  
Staffe di fissaggio in acciaio zincato  
Alimentatori e trasformatori non inclusi

Frame and ring in aluminium cast  
Steel box powder coated  
Adjustable and extractable optics  
Fixing brackets in steel zinc.PI.

Colori disponibili : BI-bianco  
Available color : WH-white  
Lampade non incluse