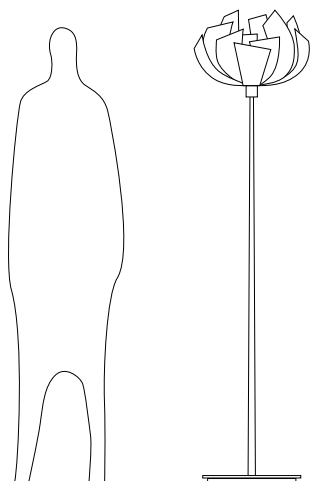




COLLEZIONE NINFEE

The "Ninfee" Collection is a continuous relationship between opposites. Oltremondano has explored the sculptural quality of the materials used. The "Ninfee" lamps are flowers that emphasize the creative dialogue between light and shadow; lamps, and at the same time, sculptures; blades of light, and at the same time, petals that shape the empty space. All flowers are hand-folded, making every piece unique in itself. The gold leaf is applied with patient and skilled hand craftsmanship; the precious material and the delicacy of the workmanship combine to give "Ninfee" lamps their evocative charm.

● Iltremondano
COLLEZIONE NINFEE
NINFEA TERRA 183



NINFEA TERRA 183

Floor lamp - Ø cm 50~55 - H cm 183

base: painted metal

brushed aluminium diffuser: Nte 183 Alu

opal methacrylate diffuser: Nte183 Plexi

aluminium diffuser with gold leaf finish: Nte 183 Gol

aluminium diffuser with gold leaf finish inside only: Nte 183 Gin

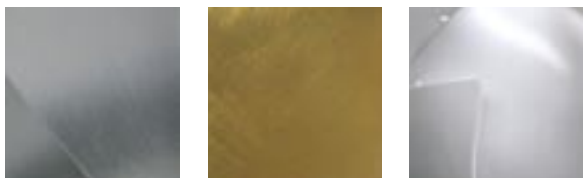
aluminium diffuser with gold leaf finish outside only: Nte 183 Gou

LIGHT INTENSITY DIMMABLE BY INCLUDED DIMMER

1xE27 max 250W



available finishes (see page 21)



●ltremondano COLLEZIONE NINFEE

FINISHES DIFFUSERS

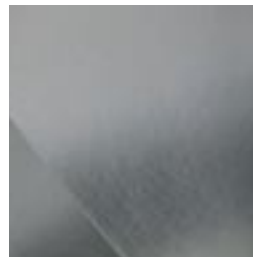
Can be applied to any version of the Ninfee Collection

ON

OFF

ALUMINIUM

Hand-brushed



GOLD LEAF

Hand-applied



OPAL METHACRYLATE

Hand-folded

