


# M200 AP CASSETTE

- PENDANT LUMINAIRE
- AXIS PARALLEL ALIGNMENT TO WORKSPACES OR AT RIGHT ANGLE TO THE WINDOW
- DIRECT / INDIRECT
-  SATIN FINISH PARABOLIC LOUVRE – SUITABLE FOR VDU WORKSPACES ( $L < 1000 \text{ CD/M}^2$  FOR  $\text{GAMMA} \geq 65^\circ$ )
- DIMMABLE VERSIONS ON REQUEST
- SQUARE EDGED EXTRUDED ALUMINIUM
- STEPPED LOW PROFILE
- SEAMLESSLY JOINED, WITHOUT VISIBLE CONNECTIONS
- SILVER FINISH

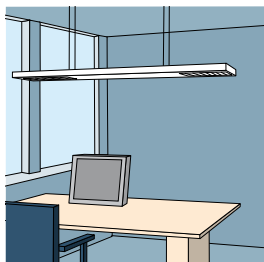
## M200 AP PENDANT LUMINAIRE



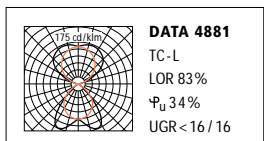
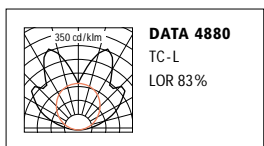
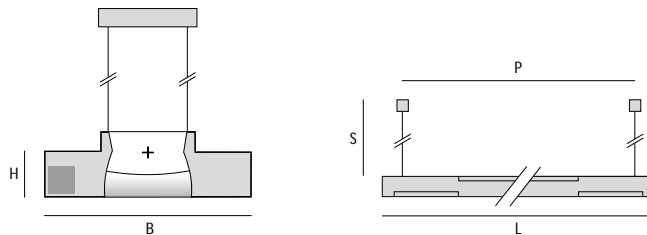
## M200 AP PENDANT LUMINAIRE

		SILVER	L	B	H	P	W	DATA
4 x 55W	TC-L	<b>SX 677 013 455</b>	2400	200	60	1150	14.5kg	4881/80

AP = Axis parallel alignment preferred for applications orientated to the building's axis, for further information see page 229



AP luminaires see page 229



L: Length · B: Width · H: Height · P: Distance between suspension points · W: Weight · S: Suspension, 1500mm suspension can be cut on site  
Dimmable versions: ... / 06 = DALI