


## DL 5233 Odino

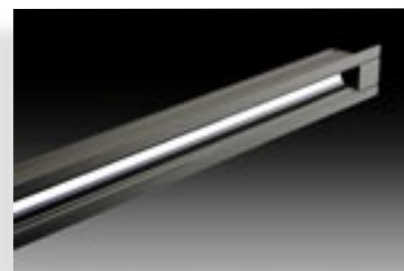
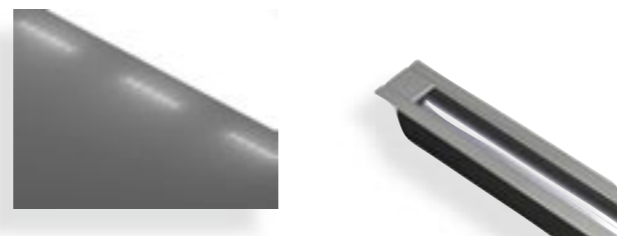
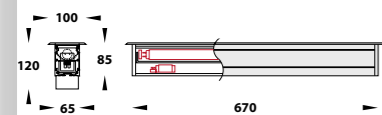
Lampada fluorescente lineare  
Linear fluorescent lamp

	599.5233.1.31.00.1	T5	G5	1 x 21 W BI/WH
	599.5233.1.31.00.2	T5	G5	1 x 21 W NE/BK
	599.5233.1.31.00.3	T5	G5	1 x 21 W GI/GR
	599.5233.1.31.00.4	T5	G5	1 x 21 W AN/AN
	599.5233.1.31.00.0	T5	G5	1 x 21 W AR/SI



SIMMETRICO

NEW


Scatola per installazione da incasso inclusa  
Wall installation housing included

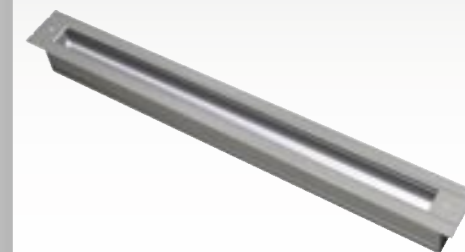
CORPO E COPERCHIO IN ALLUMINIO PRESSOFUSO ANTI-CORROSIONE  
DIFFUSORE IN POLICARBONATO OPALE STABILIZZATO UV  
VITI IN ACCIAIO INOX  
GUARNIZIONE IN SILICONE RESISTENTE AGLI AGENTI ATMOSFERICI  
ALIMENTATORE INSERITO NELL'APPARECCHIO  
PRETRATTAMENTO DI CROMATIZZAZIONE SULLA SUPERFICIE  
VERNICIATURA A POLVERE EPOSSIDICA STABILIZZATA UV

CORROSION RESISTANT DIE-CAST ALUMINIUM BODY AND COVER.  
OPAL POLYCARBONATE DIFFUSER WITH UV STABILIZED ADDITIVE.  
STAINLESS STEEL SCREWS.  
WEATHER PROOF SILICONE GASKET.  
INTEGRAL CONTROL GEAR.  
CHROMATIZED SURFACE PRE-TREATMENT.  
POLYESTER POWDER COAT WITH UV STABILIZED COMPONENT.

## DL 5234 Odino

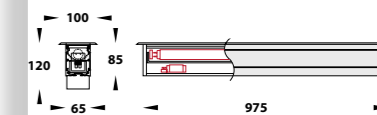
Lampada fluorescente lineare  
Linear fluorescent lamp

	599.5234.1.31.00.1	T5	G5	1 x 21 W BI/WH
	599.5234.1.31.00.2	T5	G5	1 x 21 W NE/BK
	599.5234.1.31.00.3	T5	G5	1 x 21 W GI/GR
	599.5234.1.31.00.4	T5	G5	1 x 21 W AN/AN
	599.5234.1.31.00.0	T5	G5	1 x 21 W AR/SI



ASIMMETRICO

NEW

Scatola per installazione da incasso inclusa  
Wall installation housing included

CORPO IN ALLUMINIO ESTRUSO S6063  
COPERCHI E COMPONENTI FISSAGGIO IN PRESSOFUSIONE DI ALLUMINIO ADC12 VERNI-  
CIATO A POLVERE CON PRETRATTAMENTO SPECIALE PER ESTERNI  
CALPESTABILE. MASSIMO CARICO STATICO 1000KG.  
VETRO DI PROTEZIONE TEMPERATO SPESSORE 8MM  
RIFLETTORE IN ALLUMINIO PURISSIMO. FASCIO SIMMETRICO O ASIMMETRICO  
VITERIA IN ACCIAIO INOX  
GUARNIZIONI IN GOMMA SILICONICA. TEMPERATURA DI SERVIZIO -40° +250°C

BODY IN CORROSION RESISTANT EXTRUSION ALUMINIUM S6063  
COVERS AND COMPONENTS IN HIGH-PRESSURE DIE-CAST ALUMINIUM ADC12 ALLOY  
POWDER COATED WITH PRETREATMENT FOR OUTDOOR USE  
ABLE TO WALKOVER. MAX CONSTANT LOAD PRESSURE 1000KG.  
SAFETY TEMPERED GLASS 8MM THICKNESS  
HIGH PURITY ALUMINIUM REFLECTOR. SYMMETRICAL OR ASYMMETRICAL LIGHT OUTPUT.  
STAINLESS STEEL SCREWS  
WEATHER PROOF AND DURABLE SILICONE GASKET. SERVICE TEMPERATURE -40° +250°C