
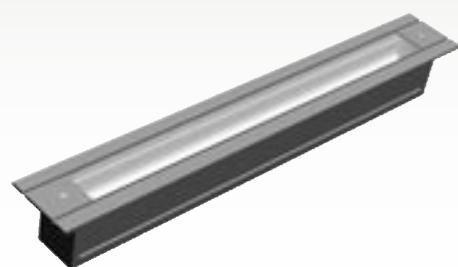


DL 5231 Torn

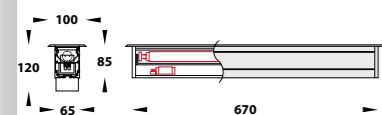
Lampada fluorescente lineare
Linear fluorescent lamp

	599.5231.1.30.00.1	T5	G5	1 x 14 W BI/WH
	599.5231.1.30.00.2	T5	G5	1 x 14 W NE/BK
	599.5231.1.30.00.3	T5	G5	1 x 14 W GI/GR
	599.5231.1.30.00.4	T5	G5	1 x 14 W AN/AN
	599.5231.1.30.00.0	T5	G5	1 x 14 W AR/SI



SIMMETRICO

NEW


Scatola per installazione da incasso inclusa
Wall installation housing included

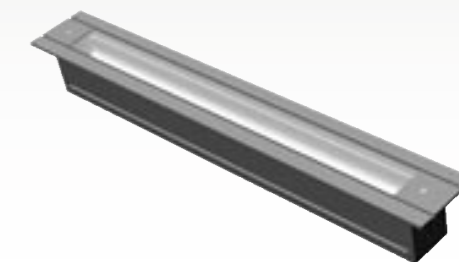
CORPO IN ALLUMINIO ESTRUSO S6063
COPERCHI E COMPONENTI FISSAGGIO IN PRESSOFUSIONE DI ALLUMINIO ADC12 VERNICIATO A POLVERE CON PRETRATTAMENTO SPECIALE PER ESTERNI
CALPESTABILE. MASSIMO CARICO STATICO 1000KG.
VETRO DI PROTEZIONE TEMPERATO SPESSORE 8MM
RIFLETTORE IN ALLUMINIO PURISSIMO. FASCIO SIMMETRICO O ASIMMETTRICO
VITERIA IN ACCIAIO INOX
GUARNIZIONI IN GOMMA SILICONICA. TEMPERATURA DI SERVIZIO -40° +250°C

BODY IN CORROSION RESISTANT EXTRUSION ALUMINIUM S6063
COVERS AND COMPONENTS IN HIGH-PRESSURE DIE-CAST ALUMINIUM ADC12 ALLOY
POWDER COATED WITH PRETREATMENT FOR OUTDOOR USE
ABLE TO WALKOVER. MAX CONSTANT LOAD PRESSURE 1000KG.
SAFETY TEMPERED GLASS 8MM THICKNESS
HIGH PURITY ALUMINIUM REFLECTOR. SYMMETRICAL OR ASYMMETRICAL LIGHT OUTPUT.
STAINLESS STEEL SCREWS
WEATHER PROOF AND DURABLE SILICONE GASKET. SERVICE TEMPERATURE -40° +250°C

DL 5232 Torn

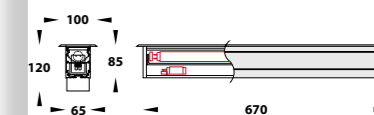
Lampada fluorescente lineare
Linear fluorescent lamp

	599.5232.1.30.00.1	T5	G5	1 x 14 W	BI/WH
	599.5232.1.30.00.2	T5	G5	1 x 14 W	NE/BK
	599.5232.1.30.00.3	T5	G5	1 x 14 W	GI/GR
	599.5232.1.30.00.4	T5	G5	1 x 14 W	AN/AN
	599.5232.1.30.00.0	T5	G5	1 x 14 W	AR/SI



ASIMMETTRICO

NEW

Scatola per installazione da incasso inclusa
Wall installation housing included

CORPO IN ALLUMINIO ESTRUSO S6063
COPERCHI E COMPONENTI FISSAGGIO IN PRESSOFUSIONE DI ALLUMINIO ADC12 VERNICIATO A POLVERE CON PRETRATTAMENTO SPECIALE PER ESTERNI
CALPESTABILE. MASSIMO CARICO STATICO 1000KG.
VETRO DI PROTEZIONE TEMPERATO SPESSORE 8MM
RIFLETTORE IN ALLUMINIO PURISSIMO. FASCIO SIMMETRICO O ASIMMETTRICO
VITERIA IN ACCIAIO INOX
GUARNIZIONI IN GOMMA SILICONICA. TEMPERATURA DI SERVIZIO -40° +250°C

BODY IN CORROSION RESISTANT EXTRUSION ALUMINIUM S6063
COVERS AND COMPONENTS IN HIGH-PRESSURE DIE-CAST ALUMINIUM ADC12 ALLOY
POWDER COATED WITH PRETREATMENT FOR OUTDOOR USE
ABLE TO WALKOVER. MAX CONSTANT LOAD PRESSURE 1000KG.
SAFETY TEMPERED GLASS 8MM THICKNESS
HIGH PURITY ALUMINIUM REFLECTOR. SYMMETRICAL OR ASYMMETRICAL LIGHT OUTPUT.
STAINLESS STEEL SCREWS
WEATHER PROOF AND DURABLE SILICONE GASKET. SERVICE TEMPERATURE -40° +250°C