


DL 3960 Indian

Lampada fluorescente compatta


Compact fluorescent Lamp

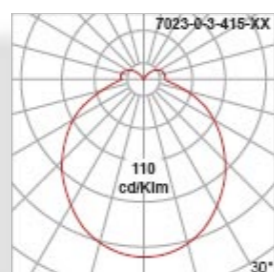
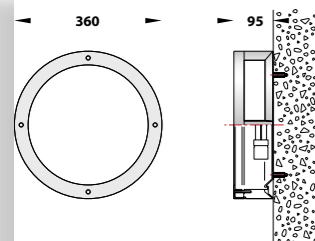
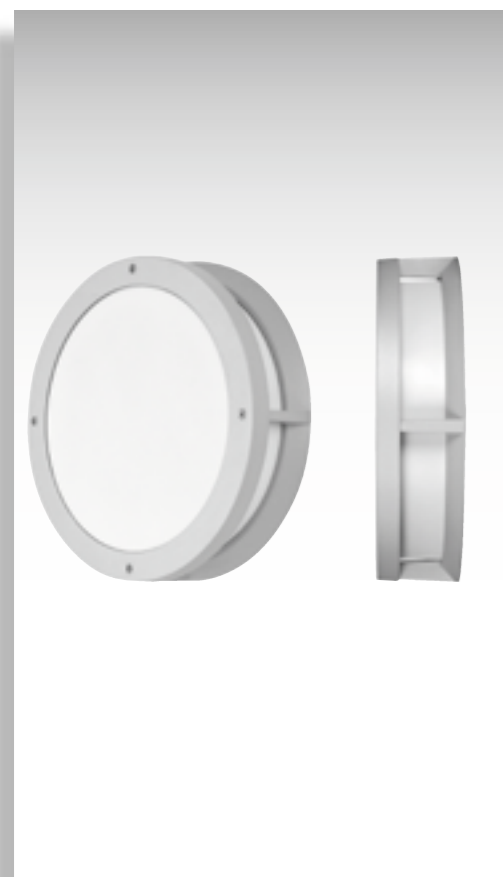
	599.3960.2.42.00.1	TC	G23	2 x 11 W BI/WH
	599.3960.2.42.00.2	TC	G23	2 x 11 W NE/BK
	599.3960.2.42.00.3	TC	G23	2 x 11 W GI/GR
	599.3960.2.42.00.4	TC	G23	2 x 11 W AN/AN
	599.3960.2.42.00.0	TC	G23	2 x 11 W AR/SI

DL 3960 Indian

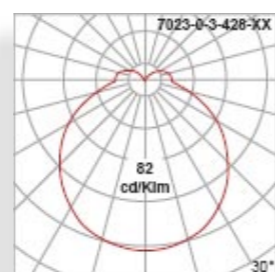
Lampada fluorescente compatta

Compact fluorescent Lamp

	599.3960.2.46.00.1	TC-D	G24-d3	2 x 26 W BI/WH
	599.3960.2.46.00.2	TC-D	G24-d3	2 x 26 W NE/BK
	599.3960.2.46.00.3	TC-D	G24-d3	2 x 26 W GI/GR
	599.3960.2.46.00.4	TC-D	G24-d3	2 x 26 W AN/AN
	599.3960.2.46.00.0	TC-D	G24-d3	2 x 26 W AR/SI



TC G23 2x11



TC-D G24d-3 2x26W



CORPO E ANELLO IN PRESSOFUSIONE DI ALLUMINIO ADC12 VERNICIATO A POLVERE CON PRETRATTAMENTO SPECIALE PER ESTERNI
DIFFUSORE IN POLICARBONATO AUTOESTINGUENTE STABILIZZATO UV
VITERIA IN ACCIAIO INOX
GUARNIZIONI IN GOMMA SILICONICA. TEMPERATURA DI SERVIZIO -40° +250°C

BODY AND FRONT COVER IN HIGH-PRESSURE DIE-CAST ALUMINIUM ADC12 ALLOY POWDER COATED WITH PRETREATMENT FOR OUTDOOR USE
SELF-EXTINGUISHING POLYCARBONATE DIFFUSER WITH UV STABILIZED ADDITIVE STAINLESS STEEL SCREWS
WEATHER PROOF AND DURABLE SILICONE GASKET.
SERVICE TEMPERATURE -40° +250°C

