



Inka

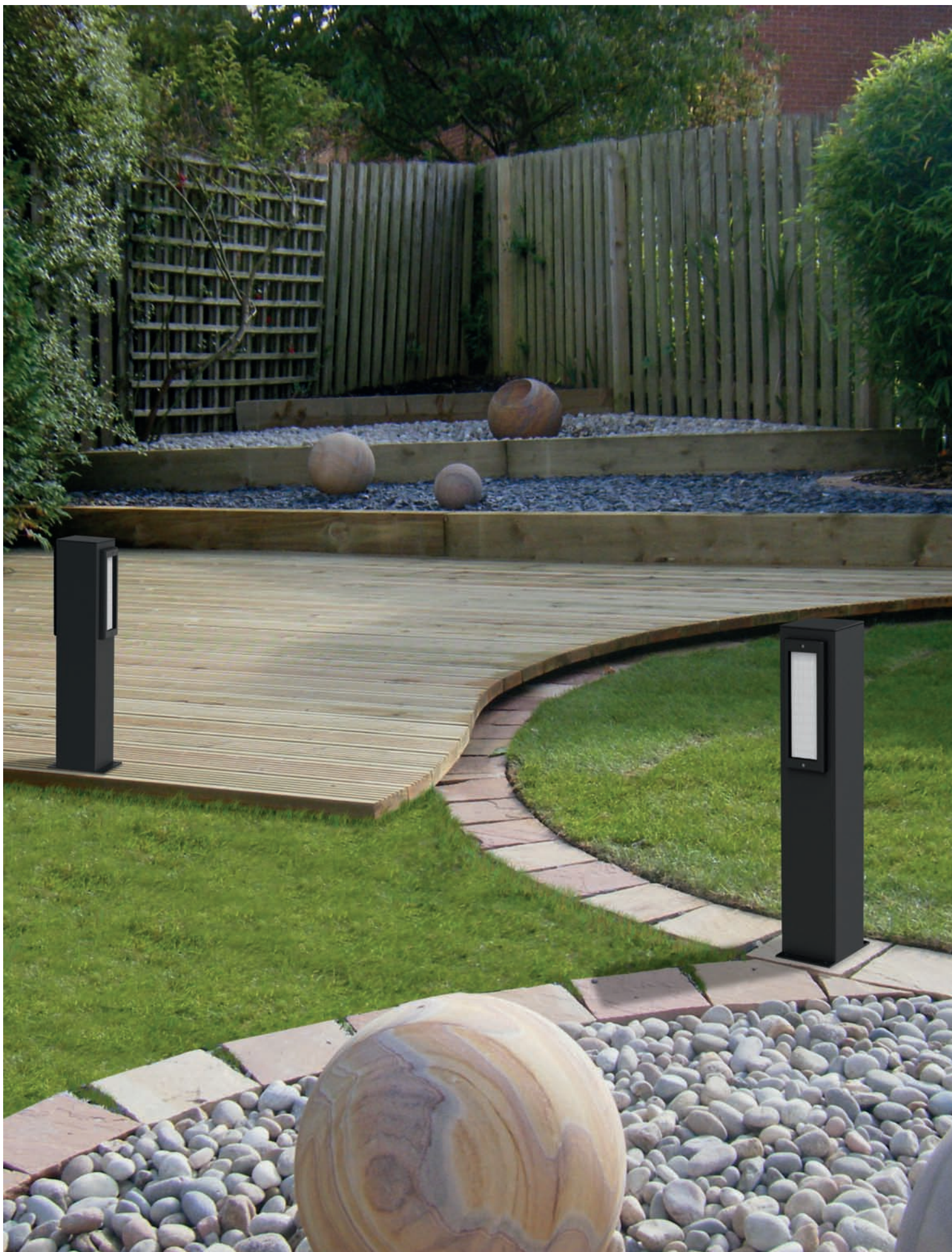
Lampione da giardino. Diffusore in policarbonato opale. Struttura in pressofusione di alluminio, palo in alluminio estruso con particolari in pressofusione di alluminio, verniciatura in polvere poliestere con trattamento di fosfatazione. Viti in acciaio inox. Guarnizioni in gomma ai polimeri. Equipaggiata con led smd e alimentatore elettronico incorporato. Versioni REM per utilizzo con alimentatore remoto 12V non incluso e acquistabile separatamente. Fornito con dispositivo per il collegamento di un cavo di ingresso (alimentazione della rete) e due cavi di uscita (alimentazione degli apparecchi a "cascata" in parallelo).

Bollard. Diffuser made in opal polycarbonate. Structure made in die casting aluminium, pole made in extruded aluminium and die casting aluminium parts with polyester paint and phosphate treatment. Inox steel screws. Gasket made in rubber. Supplied with smd led and electronic driver included. REM versions arranged for 12V remote ballast not included and purchasable separately. Equipped with a device for connecting an input cable (mains supply) and two output cables (power to devices in "cascade" in parallel).

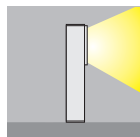
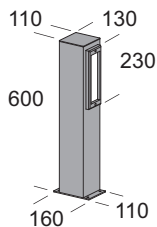
Borne. Diffuseur en polycarbonate opale. Structure réalisée en fonte d'aluminium, pilier réalisé en extrusion d'aluminium avec parties en fonte d'aluminium. Vernis polyester traitement de phosphatation. Vis en acier inox. Joint en gomme. Equipée avec led smd et ballast électronique incorporé. Versions REM pour utilisation avec ballast 12V à distance pas inclus et vendu séparément. Equipé d'un dispositif permettant de connecter un câble d'entrée (alimentation secteur) et de deux câbles de sortie (puissance aux dispositifs de la "cascade" en parallèle).

Baliza. Difusor de policarbonato opal. Estructura en fundición a presión de aluminio, poste de aluminio extrudido con detalles fundidos a presión de aluminio, pintura en polvo poliéster con tratamiento de fosfatación. Tornillos de acero inoxidable. Junta de protección de goma. Suministrada con led smd y alimentador electrónico incluido. Versiones REM para el uso con alimentador 12V a distancia no incluido y que se vende separado. Suministrado con un dispositivo para conectar un cable de entrada (red eléctrica) y dos cables de salida (energía a los dispositivos en "cascada" en paralelo).

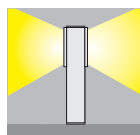
Pollerleuchte. Diffusor aus opalem Polycarbonat. Struktur aus Aludruckguss, Ständer aus Aluminium extrusion mit Einzelteilen aus Aludruckguss, Lackierung aus Polyester Pulver mit Phosphatierung. Schrauben aus Edelstahl. Dichtungen aus Polymergummi. Ausgestattet mit LED smd. Eingebautem elektronischem Versorgungsgerät. REM Versionen für den Einsatz mit 12V Fernspeisung nicht inbegriffen und separat erhältlich. Ausgestattet mit einer Vorrichtung zum Anschließen einer Eingangsspannung Kabel (Netz) und zwei Output-Kabel (Stromversorgung von Geräten in "Kaskade" parallel).



Inka 1/60 - 1/62



Articolo Item	Codice Code		W _{max}	Icona	LUMEN	Icona	Icona
	AT	GR					
LED-W inka 1/60 led-W	57407	57406	44x0,08W	led	-	IP65	⊕ A
	57404	57403	44x0,08W	led	-	IP65	⊕ A
LED-N inka 1/60 led-N	57417	57416	44x0,08W	led	-	IP65	⊕ A
	57414	57413	44x0,08W	led	-	IP65	⊕ A
LED-C inka 1/60 led-C	57397	57396	44x0,08W	led	-	IP65	⊕ A
	57394	57393	44x0,08W	led	-	IP65	⊕ A
LED-W inka 1/62 led-W	57437	57436	88x0,08W	led	-	IP65	⊕ A
	57434	57433	88x0,08W	led	-	IP65	⊕ A
LED-N inka 1/62 led-N	57447	57446	88x0,08W	led	-	IP65	⊕ A
	57444	57443	88x0,08W	led	-	IP65	⊕ A
LED-C inka 1/62 led-C	57427	57426	88x0,08W	led	-	IP65	⊕ A
	57424	57423	88x0,08W	led	-	IP65	⊕ A



Versione LED LED version

AT RAL 7016
Antracite gofrato *Embossed anthracite*

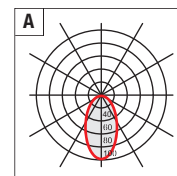
GR RAL 9006
Grigio gofrato *Embossed grey*

LED-W 3500K luce calda - 3500K warm white

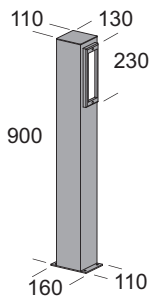
LED-N 4200K luce naturale - 4200K natural white

LED-C 5500K luce fredda - 5500K cool white

REM Utilizzo con alimentatore remoto (pag.466) non incluso e acquistabile separatamente.
Arranged for remote ballast (pag.466) not included and purchasable separately.



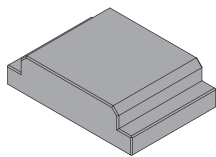
Inka 1/90 - 1/92



Articolo Item	Codice Code		W _{max}		LUMEN			
	AT	GR						
LED-W inka 1/90 led-W	57467	57466	44x0,08W	led	-	IP65		A
inka 1/90 led-W REM	57464	57463	44x0,08W	led	-	IP65		A
LED-N inka 1/90 led-N	57477	57476	44x0,08W	led	-	IP65		A
inka 1/90 led-N REM	57474	57473	44x0,08W	led	-	IP65		A
LED-C inka 1/90 led-C	57457	57456	44x0,08W	led	-	IP65		A
inka 1/90 led-C REM	57454	57453	44x0,08W	led	-	IP65		A



LED-W inka 1/92 led-W	57497	57496	88x0,08W	led	-	IP65		A
inka 1/92 led-W REM	57494	57493	88x0,08W	led	-	IP65		A
LED-N inka 1/92 led-N	57507	57506	88x0,08W	led	-	IP65		A
inka 1/92 led-N REM	57504	57503	88x0,08W	led	-	IP65		A
LED-C inka 1/92 led-C	57487	57486	88x0,08W	led	-	IP65		A
inka 1/92 led-C REM	57484	57483	88x0,08W	led	-	IP65		A

Alimentatore remoto
Remote ballastnr max apparecchi collegabili
max connected devices
Inka 1/60 - 90 Inka 1/62 - 92

alimentatore 6W-12V	90020	dims: 60x35x21 mm	1	-
alimentatore 13W-12V	90021	dims: 158x22x19 mm	3	1
alimentatore 20W-12V	90022	dims: 146x55x19 mm	5	2
alimentatore 35W-12V	90023	dims: 185x43x30 mm	10	5
alimentatore 60W-12V	90024	dims: 254x45x35 mm	16	8
alimentatore 100W-12V	90025	dims: 270x63x41 mm	28	14
alimentatore 150W-12V	90026	dims: 270x63x41 mm	42	21

Versione LED LED version

AT RAL 7016
Antracite goffrato *Embossed anthracite*
GR RAL 9006
Grigio goffrato *Embossed grey*
LED-W 3500K luce calda - *3500K warm white*
LED-N 4200K luce naturale - *4200K natural white*
LED-C 5500K luce fredda - *5500K cool white*
REM Utilizzo con alimentatore remoto (pag.466) non incluso e acquistabile separatamente.
Arranged for remote ballast (pag.466) not included and purchasable separately.
