



## Spin

Lampada da parete. Diffusore in vetro temperato trasparente. Struttura in alluminio estruso con particolari in pressofusione di alluminio, verniciatura in polvere poliesteri con trattamento di fosfatazione. Viti in acciaio inox. Guarnizioni in silicone. Equipaggiata con **led di potenza** e alimentatore elettronico incorporato. Versioni REM per utilizzo con alimentatore remoto 500mA non incluso e acquistabile separatamente.

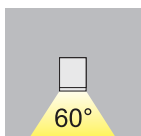
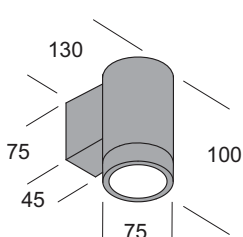
Wall lamp. Diffuser made in tempered transparent glass. Structure made in extruded aluminium and die casting aluminium parts with polyester paint and phosphate treatment. Inox steel screws. Gaskets made in silicone rubber. Equipped with **power led** and electronic gear included. REM versions arranged for 500mA remote ballast not included and purchasable separately.

Lampe à mur. Diffuseur en verre tempéré transparent. Structure réalisée en extrusion d'aluminium avec parties en fonte d'aluminium. Vernis polyester avec traitement de phosphatation. Vis en acier inox. Joint en gomme de silicone. Equipée avec **led de puissance** et ballast électronique incorporé. Versions REM pour utilisation avec ballast 500mA à distance pas inclus et vendu séparément.

Lámpara de pared. Difusor de vidrio templado transparente. Estructura de aluminio extrudido con detalles Fundidos a presión de aluminio, pintura en polvo poliéster con tratamiento de fosfatación. Tornillos de acero inoxidable. Junta de protección de silicona. Suministrada con **led de potencia** y alimentador electrónico incorporado. Versiones REM para el uso con alimentador 500mA a distancia no incluido y que se vende separado.

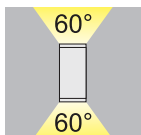
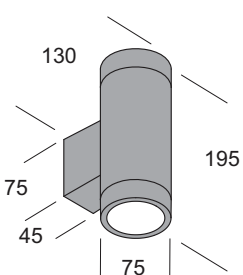
Wandleuchte. Diffusor aus temperiertem Transparentglas. Struktur aus Aluminium extrusion mit Einzelteilen aus Aludruckguss, Lackierung aus Polyester Pulver Mit Phosphatierung. Schrauben aus Edelstahl. Silikondichtungen. Ausgestattet mit **LED power** und eingebautem elektronischem Versorgungsgerät. REM Versionen für den Einsatz mit 500mA Fernspeisung nicht inbegriffen und separat erhältlich.

Spin 1 Led



Articolo Item	Codice Code			W <sub>max</sub>	led	LUMEN	IP54	⊕	☼
	AT	BI	GR						
LED-N spin 1 led-N	55217	55211	55216	3x2W	led	-	IP54	⊕	A ☼
spin 1 led-N REM	55214	55212	55213	3x2W	led	-	IP54	⊕	A ☼

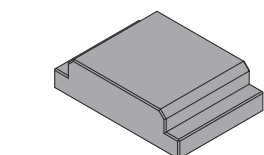
Spin 2 Led



Articolo Item	Codice Code			W <sub>max</sub>	led	LUMEN	IP54	⊕	☼
	LED-N	AT	BI						
LED-N spin 2 led-N	55227	55221	55226	6x2W	led	-	IP54	⊕	B ☼
spin 2 led-N REM	55224	55222	55223	6x2W	led	-	IP54	⊕	B ☼

Alimentatore remoto  
Remote ballast

nr max apparecchi collegabili  
max connected devices



	Codice	dims:	nr max apparecchi collegabili	
			Spin 1 REM	Spin 2 REM
alimentatore 35W-500mA	90030	dims: 125x79x22 mm	5	2
alimentatore 50W-500mA	90031	dims: 125x79x22 mm	8	4

**Versione LED** LED version

**AT RAL 7016**  
Antracite gofrato *Embossed anthracite*

**BI RAL 9016**  
Bianco gofrato *Embossed white*

**GR RAL 9006**  
Grigio gofrato *Embossed grey*

LED-N 4200K luce naturale - 4200K natural white

REM Utilizzo con alimentatore remoto (pag.466) non incluso e acquistabile separatamente  
*Arranged for remote ballast (pag.466) not included and purchasable separately*

