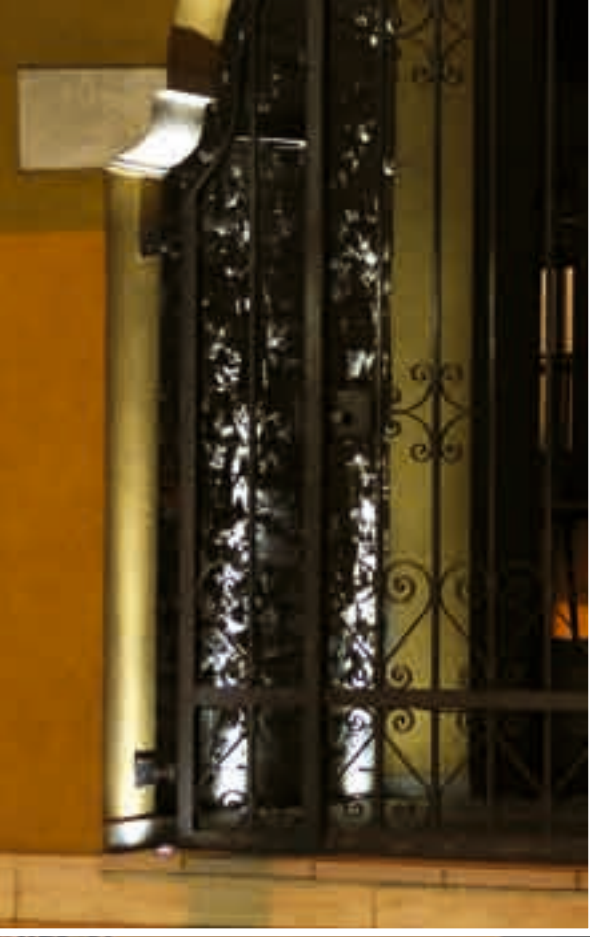


■ **mira 40**
pagg. 34-35
project by Moretti Luce - IT





■ **mira 40**
pagg. 34-35
project by Moretti Luce - IT

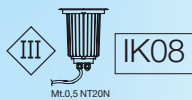
art.
5201
5211

design **Ufficio Tecnico Landa**

frontale in acciaio inox AISI 316L
frame **stainless steel AISI 316L**
cadre en acier inoxydable
AISI 316L
comis **acero inox AISI 316L**
Rahmen aus **Edelstahl**
AISI 316L

corpo **alluminio estruso**
body **extruded aluminium**
corps **en aluminium extrudé**
cuerpo **aluminio extrusionado**
Körper aus **Aluminium**

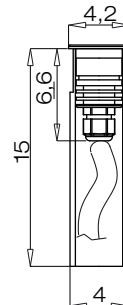
diffusore **vetro trasparente**
e opale
diffuser **glass transparent**
and opal
diffuser **verre transparent**
et opale
difusor **vidrio transparente**
y ópalo
Diffuser **Glas klar un opal**



For technical details visit
www.landa.it

IP67

Art.	Beam	W	mA	Type	LUX at 1mt
5211LS1	○	1	350	6300°K 100LM	865
5211LS1H	○	10°	1	3200°K 80LM	690
5211LS1B	●			22LM	190
5211LL1	○	1	350	6300°K 100LM	160
5211LL1H	○	40°	1	3200°K 80LM	130
5211LL1B	●			22LM	35
5201L1	○	1	350	6300°K 100LM	18
5201L1H	○	40°	1	3200°K 80LM	14
5201L1B	●			22LM	4

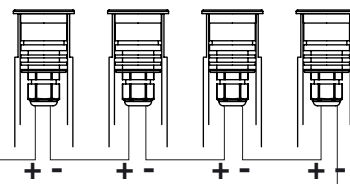


Accessories on request:

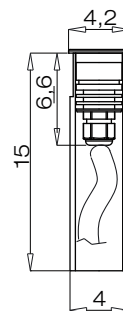


electronic Transformer for **max 12 LED**
0409BT009 48V 350mA IP67

Transformer 350mA



Art.	Beam	W	mA	Type	LUX at 1mt
5211LS3	○	3	700	6300°K 170LM	1470
5211LS3H	○	10°	3	3200°K 136LM	1180
5211LS3B	●			38LM	328
5211LL3	○	3	700	6300°K 170LM	275
5211LL3H	○	40°	3	3200°K 136LM	220
5211LL3B	●			38LM	62
5201L3	○	3	700	6300°K 170LM	30
5201L3H	○	40°	3	3200°K 136LM	24
5201L3B	●			38LM	7

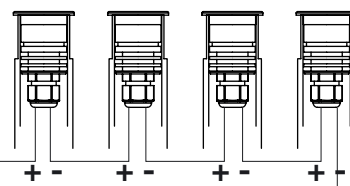


Accessories on request:



electronic Transformer for **max 10 LED**
0409BT010 48V 700mA IP67

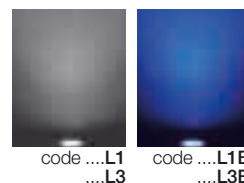
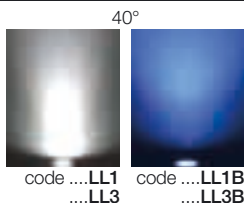
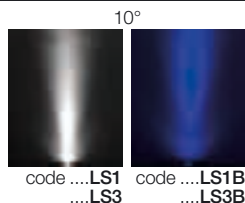
Transformer 700mA



ELECTRIFICATION

LED

dettagli / details / details
detalles / details:
pages 4-5



Mira 40



LED