



example code:
| art. | finishing | size | electrification |
9510 . 04 F18

example copper top code:
| art. | finishing | size | electrification |
9510 **A** 04 F18

art.
9510

design **Ufficio Tecnico Landa**

corpo **acciaio inox AISI 316L**
body **stainless steel AISI 316L**
corps **acier inoxydable AISI 316L**
cuerpo **acero inox AISI 316L**
Körper **Edelstahl AISI 316L**



code 9510....

960°

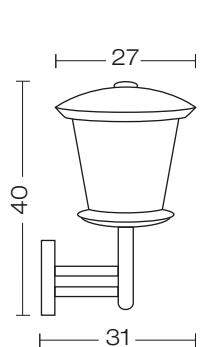
diffusore **policarbonato trasparente**
diffuser **transparent polycarbonate**
diffuser **polycarbonate transparent**
difusor **policarbonato transparente**
Diffuser **Polykarbonat klar**



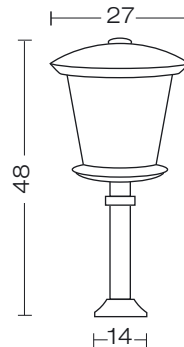
code 9510....**B**

850°

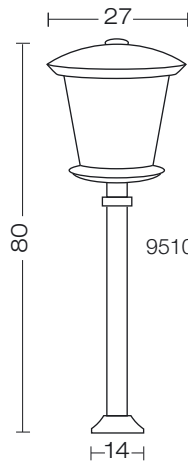
diffusore **policarbonato opale**
diffuser **opal polycarbonate**
diffuser **polycarbonate opale**
difusor **policarbonato ópalo**
Diffuser **Polykarbonat opal**



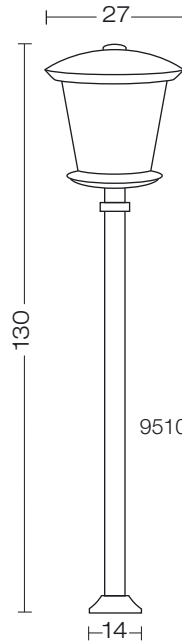
9510.00
.00B
F18.00
F18.00B
A00
A00B
F18A00
F18A00B



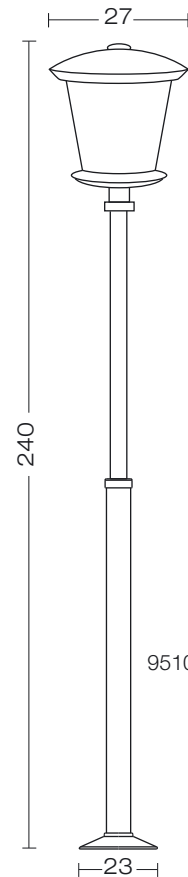
9510.04
.04B
F18.04
F18.04B
A04
A04B
F18A04
F18A04B



9510.14
.14B
F18.14
F18.14B
A14
A14B
F18A14
F18A14B

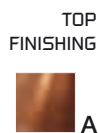
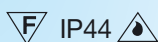


9510.34
.34B
F18.34
F18.34B
A34
A34B
F18A34
F18A34B



9510.PA6
.PA6B
F18.PA6
F18.PA6B
APA6
APA6B
F18APA6
F18APA6B

For technical details visit
www.landa.it



code 9510A.....



articoli disponibili anche con
cappello in rame
the items are also available
with copper top
ces articles sont disponibles aussi
avec le chapeau en cuivre
piezas disponibles
también en cobre
Diese Artikel sind auch mit
Kupfer-Dach verfügbar



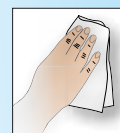
code 9510.....

ELECTRIFICATION

	1 x 100 W	1 x 23 W	1 x 20 W	F18 1 x 18 W Gx24 q-2
9510.00	9510A00			
.04	A04			
.14	A14			
.34	A34			
.PA6	APA6			

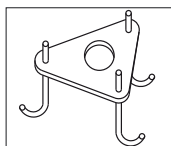


code 00DEC



pulisci acciaio
stainless steel cleaner
kit nettoyage inox
abrillantador inox
Edelstahlreiniger
details: **page 267**

Accessories on request:



code **00APA6**
Anchor Bolt

available for:
9510.PA6
9510F18.PA6
9510.PA6B
9510F18.PA6B

available for:
9510APA6
9510F18APA6
9510APA6B
9510F18APA6B



■ **augusta**
inox rame
9510A34
pagg. 180-181

■ **augusta**
inox
9510.34
pagg. 180-181