

serie/series

rio



example code:

art. | finishing | electrification | colour
425 | | PL13 | nga

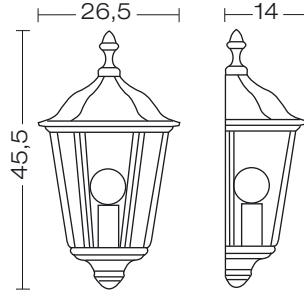
example copper top code:

art. | finishing | electrification | colour
425 | **A** | PL13 | nga

art.

425

corpo **alluminio pressufuso**
body **in die casting aluminium**
corps **en aluminium moulé**
sous pression
cuerpo **aluminio inyectado**
Körper **aus Aluminium-Druckguss**



425
425**A**
425**B**

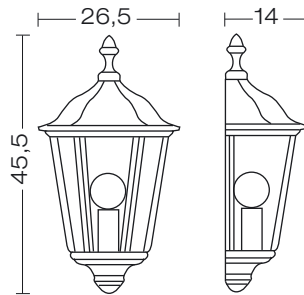
425**PL13**
425**APL13**
425**F13**
425**AF13**

code 425
425**A**



850°

diffusore **policarbonato trasparente**
diffuser **transparent polycarbonate**
diffuser **polycarbonate transparent**
difusor **policarbonato transparente**
Diffuser **Polykarbonat klar**



sensor

dettagli
details
details
detailes
details:
page 7

425**SEN** **NEW**
425**ASEN** **NEW**



code 425**SEN**
425**ASEN**
425**B**
425**PL13**
425**APL13**
425**F13**
425**AF13**



850°

diffusore **policarbonato opale**
diffuser **opal polycarbonate**
diffuser **polycarbonate opale**
difusor **policarbonato ópalo**
Diffuser **Polykarbonat opal**

For technical details visit
www.landa.it



TOP FINISHING

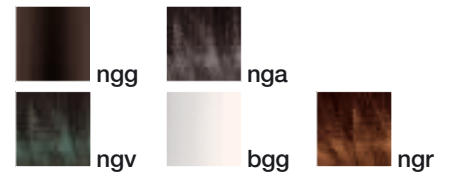


code 425**A**....



articoli disponibili anche con cappello in rame
the items are also available with copper top
ces articles sont disponibles aussi avec le chapeau en cuivre
piezas disponibles también en cobre
Diese Artikel sind auch mit Kupfer-Dach verfügbar

COLOURS



ELECTRIFICATION

1 x 100 W	1 x 23 W	1 x 20 W	PL13 1 x 13 W G24 d-1	F13 1 x 13 W G24 q-1
425 425 SEN 425 A 425 ASEN 425 B	5,3 16,5	5,3 16,5		

