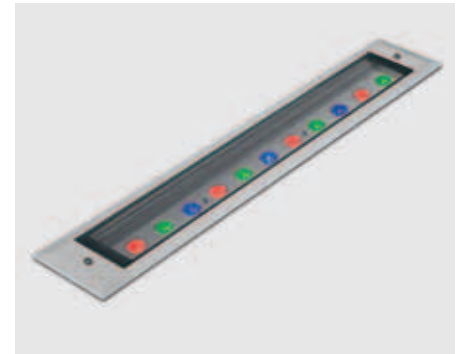
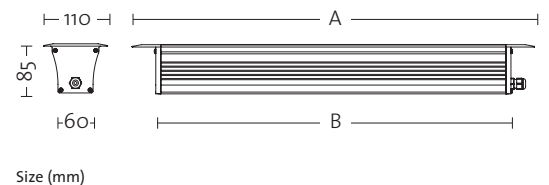


CODE	DESCRIPTION	
<b>2640 RGB LED</b>	<b>Module 500 mm</b> 9 LED - 1W Colour: 33 - IP 67 - IK09 - Kg 6.00 Ballast to be ordered separately. Fornito con spezzone di cavo 1000mm FROR 7x1mm <sup>2</sup>	
<b>2641 RGB LED</b>	<b>Module 1000 mm</b> 18 LED - 1W Colour: 33 - IP 67 - IK09 - Kg 6.00 Ballast to be ordered separately. Fornito con spezzone di cavo 1000mm HO7RN-F 4x1mm <sup>2</sup>	
<b>2642 RGB LED</b>	<b>Module 1500 mm</b> 27 LED - 1W Colour: 33 - IP 67 - IK09 - Kg 6.00 Ballast to be ordered separately. Fornito con spezzone di cavo 1500mm HO7RN-F 4x1mm <sup>2</sup>	
<b>450</b>	<b>Remote control</b> It allows to switch on and off and to adjust the light intensity of the colour flow	
<b>451</b>	<b>RGB LED ballast</b> from 190V to 256V AC - 350 mA IP 40	
	<b>Maximum connection of 3 luminaires code 2640 Rgb</b> <b>Maximum connection of 2 luminaires code 2641 Rgb</b> <b>Maximum connection of 1 luminaires code 2642 Rgb</b>	
<b>452</b>	<b>Receiver plus control</b> for RGB Led	
	<b>Maximum connection of 25 ballasts for LED Rgb code 451</b>	
<b>453</b>	<b>DMX 512 control unit</b> Max 6 channels	
<b>455</b>	<b>DMX interface</b>	
	<b>Maximum connection of 25 ballasts for LED Rgb code 451</b>	



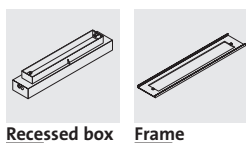
MODULE LENGTH	A	B
<b>2640 RGB LED</b>	576	500
<b>2641 RGB LED</b>	1076	1000
<b>2642 RGB LED</b>	1590	1514



For ballasts and control units, see page 477

**ACCESSORIES**

- 946** Galvanised steel recessed box  
For code 2640 RGB LED
- 947** For code 2641 RGB LED
- 983** For code 2642 RGB LED
  
- 976** Galvanised steel structure for false-ceilings  
For code 2640 RGB LED
- 977** For code 2641 RGB LED
- 988** For code 2642 RGB LED



33 anodised natural

**NOTE**