


NUT

A projector which, in addition to advanced lighting performance of LED light sources, uses the language of forms to play a leading role in street furniture.

A new outdoor projector, which immediately reveals important and original design elements. Going beyond the minimalism of certain types of design – oriented to the mere function of the luminaire, as a neutral container of light – Nut rediscovers the pleasure that originates from seeing an object with beautiful, smooth and harmonious lines and an essential shape. Inspired by organic design, Nut, like a nutshell, is defined by the sinuous curves of its body. Its harmonious and proportionate structure suggests a natural and balanced dimension of artificial light in the constructed environment: the effect is reassuring, elegant and relaxing. Nut is indicated for illuminating large outdoor areas and streets.

Technical specifications

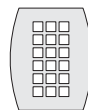
The Nut outdoor projector is extremely flexible in its applications, both for wall and pole mounting. The projector is entirely made of die-cast aluminium and is fitted with a front louver in high-resistance glass. Gaskets are of silicone material and screws of stainless steel. II insulation class  guarantees maximum safety. The hot-galvanised and coated steel poles, to be mounted on the ground or with fixing plate, are available in two different heights (4000 - 6000 mm) and are provided with cable inlet slot, earthing connection, electrical equipment slot. Besides guaranteeing excellent lighting performance, the new LED sources provide significant savings both in terms of energy consumption and maintenance operations.



Optical components and light sources

This version is specific for use of LED light sources. The luminaire is equipped with 18 LEDs with white light, 25W total.

LED



18 LED - 25W

500mA



NUT

DESIGN - STEFANO DALL'OSSO



Structural features

Installation: floor, wall and pole

Luminaire housing: die-cast aluminium

Louver: tempered glass

Light sources: LED

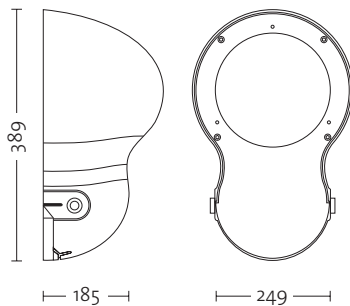
Standard finishing: anthracite

Protection class: IP65

Insulation class: II

Power supply: 230V-50Hz

Adjustable projector with LED lighting system.
Complete with electronic ballast.
Front louver in tempered glass.

CODE	DESCRIPTION	Dimensions in mm
2739 BIF	NUT Small 18 white-light LEDs - 25W - 6300K 230V - 50Hz Colour: 19 IP 65	



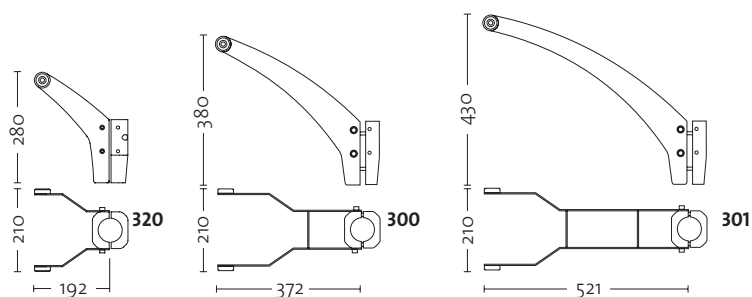
19 anthracite
All luminaires are equipped with
electronic ballasts.

NOTES

CODE	DESCRIPTION	Dimensions in mm
------	-------------	------------------

Bracket for pole head mounting
 Single bracket for one spotlight
 Pole head mounting
 Steel sheet with epoxy polyester coat finish
 Stainless steel screws
 Colour: 19

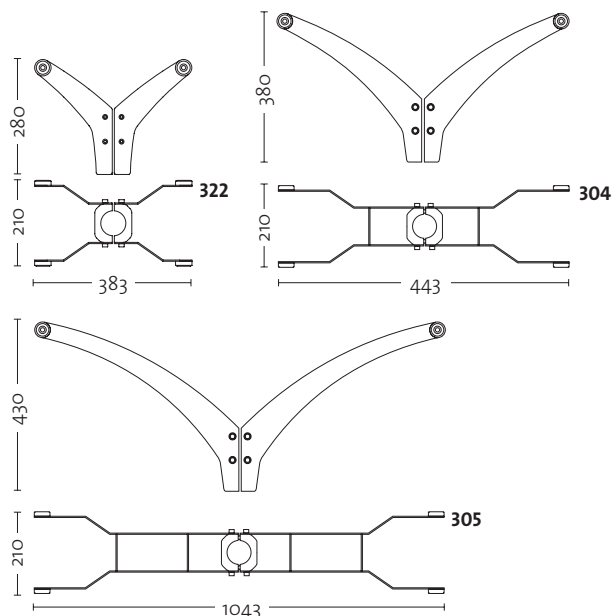
- 320** NUT Small
 Single support, short
300 Single support, medium
301 Single support, long



CODE	DESCRIPTION	Dimensions in mm
------	-------------	------------------

Bracket for pole head mounting
 Double support for two spotlights
 Pole head mounting
 Steel sheet with epoxy polyester coat finish
 Stainless steel screws - Colour: 19

- 322** NUT Small
 Double support, short
304 Double support, medium
305 Double support, long



19 anthracite

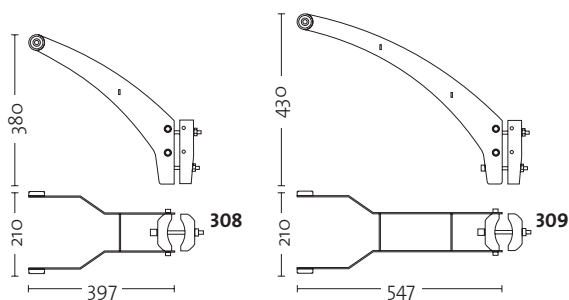
NOTES

Brackets for intermediate pole mounting.
 Wall mounting brackets.
 Brackets for angular mounting.

CODE	DESCRIPTION	Dimensions in mm
------	-------------	------------------

Bracket for intermediate pole mounting
 Single bracket for one spotlight
 Intermediate mounting
 Steel sheet with epoxy polyester coat finish
 Stainless steel screws - Colour: 19

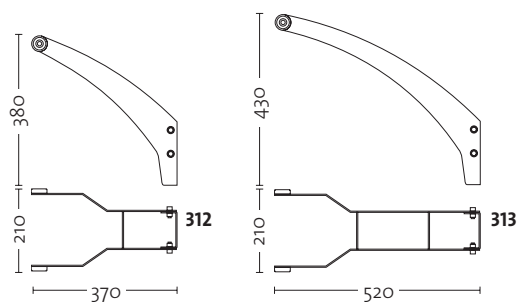
NUT Small
 Single support, medium
 Single support, long



CODE	DESCRIPTION	Dimensions in mm
------	-------------	------------------

Bracket for wall mounting
 Single bracket for one spotlight
 Wall mounting
 Steel sheet with epoxy polyester coat finish
 Stainless steel screws - Colour: 19

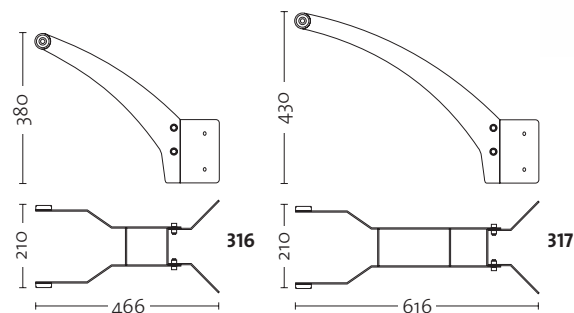
NUT Small
 Single support, medium
 Single support, long



CODE	DESCRIPTION	Dimensions in mm
------	-------------	------------------

Bracket for angular mounting
 Supporto singolo per un punto luce
 Installazione ad angolo
 Lamiera in acciaio verniciato in epossipoliestere
 Viti in acciaio inox - Colori: 19

NUT Small
 Single support, medium
 Single support, long



19 anthracite

NOTES